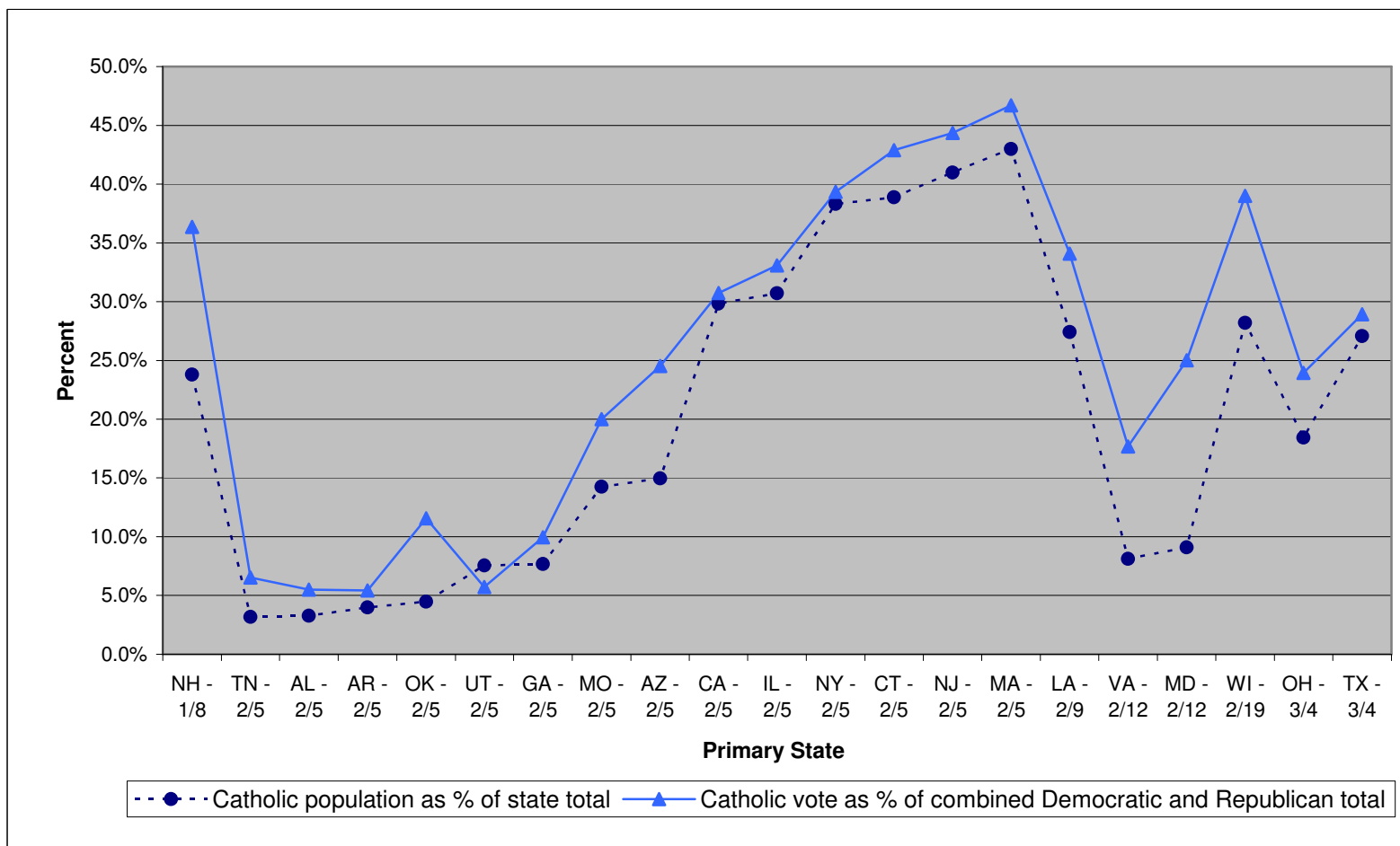


2008 Presidential Primaries Relative Catholic Voter Importance by State For Primaries Thru March 4, 2008



NOTE 1: For the 21 (twenty-one) states that held both Democratic and Republican primaries as of March 4, 2008 for which exit poll data is available.

NOTE 2: In order of primary date and then ascending order of estimated Catholic population as percent of state total.

DATA SOURCE: Percent Catholic vote compiled from data from *CNN* and *MSNBC*.

Percent Catholic population as percent of state total compiled from USCCB data for estimated diocesan Catholic population, compiled by state, and state population from U.S Census Bureau.